

# X - Series 600/1000/1400/1600/1800 K-L

High flexibility. Suitable for sportswear, jacket and shirts. Designed with modular solutions to be equipped with stackers feeding stations and return belt device.

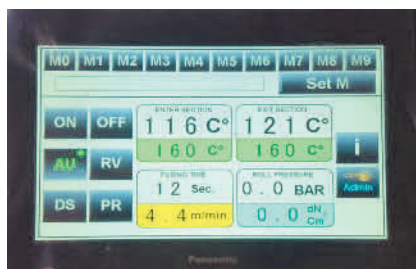
## Advantages:

Compact design, **longest and more comfortable loading belt**, long heating area, fast warm-up, high reliability and accurate pressure and temperature settings



## The Control Unit :

### Touch Screen Control (TCX)



Our TCX Touch screen control offers you the possibility to have all standard functions and programmable memories

#### Touch Screen Control functions:

- Set/Actual temperature
- On/Off button
- Pressure indicator
- Pressure regulator
- Belt speed in mt/min and seconds
- Running inversion button
- Auto self Cooling button
- Heating element diagnostic, compressed air supply, belt tracking and engine thermic
- OUT button for total pressure exclusion
- Error reports and suggested solutions
- Fusing program storage with Easy Recall

### Touch Screen Control (TCX) 4.0



Our TCX 4.0 Touch screen control offers you the possibility to have all standard functions and programmable memories, all System can be connected to LAN.

#### Touch Screen Control functions:

- Set/Actual temperature
- On/Off button
- Pressure indicator
- Pressure regulator
- Belt speed in mt/min and seconds
- Running inversion button
- Auto self Cooling button
- Heating element diagnostic, compressed air supply, belt tracking and engine thermic
- OUT button for total pressure exclusion
- Error reports and suggested solutions
- Fusing program storage with Easy Recall

## Heating System

X-Series has 1100 mm length heating area, this ensure the best and accurate heating for fusing all the materials using a fusing average speed of 6 mt/min.

### The heating Element

Anodized Aluminium molded extrusion

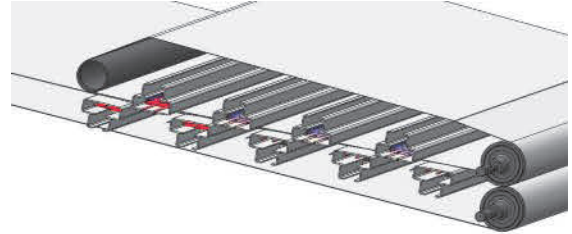
### The heating System

Aluminium heating insert in an aluminium molded extrusion 5 mm tick.

## The Heating Zone Configuration

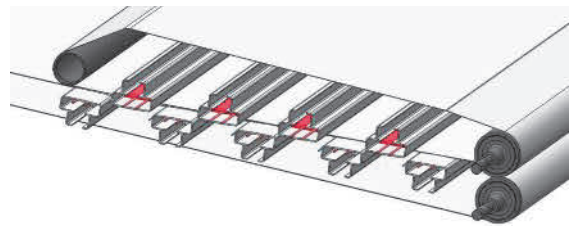
### Pre-Heating + Final Heating

Pre-heating in the first section (first 3 elements) managed by 1 thermoregulator. Final heating (other 6 elements) managed by 1 thermoregulator. This is the optimal configuration for high sensitive fabrics.



### Continuous Top/Bottom configuration.

The four upper heating element managed by a single Thermoregulator. The five lower heating element managed by a single thermoregulator. This is the optimal configuration for difficult melting interlinings.

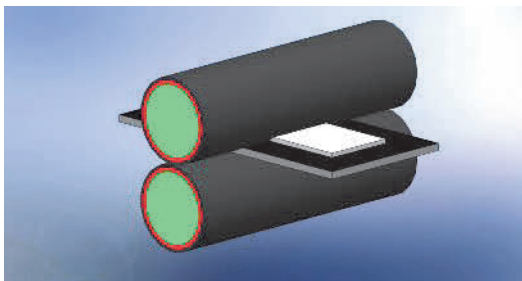


## The Pressure System

Martin Group in all fusing machine uses the same pressure system. Double roller pressure system with lever action to allow "ZERO" pressure fusing with "OUT" system.

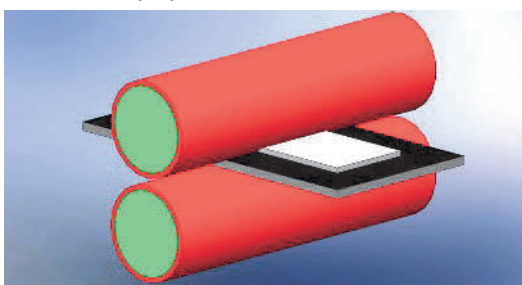
## The various configurations:

### ADAPTIVE (AD)



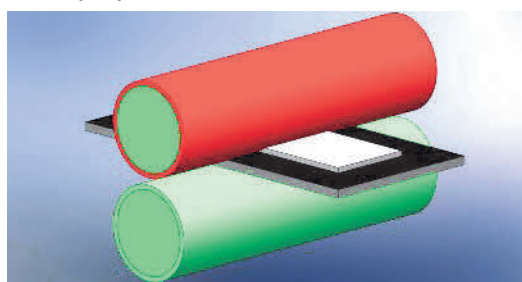
C40 inner core body with 2 different vulcanized silicon hardness covers.  
2 Vulcanized Silicon Pressure rollers.  
This system ensure a more accurate fusing also with fabric with different tickness in the same working line and also for pressure sensitive fabrics.

### STANDARD (ST)



C40 inner core body with vulcanized silicon covers.  
2 Vulcanized Silicon Pressure rollers.  
Applicable for all jacket production and outwear

### HARD (HA)



C40 inner core body with vulcanized Silicon covers.  
1 Vulcanized Silicon Pressure roller  
1 Hrad Stell body roller  
Applicable on shirt industry and hard interlinings